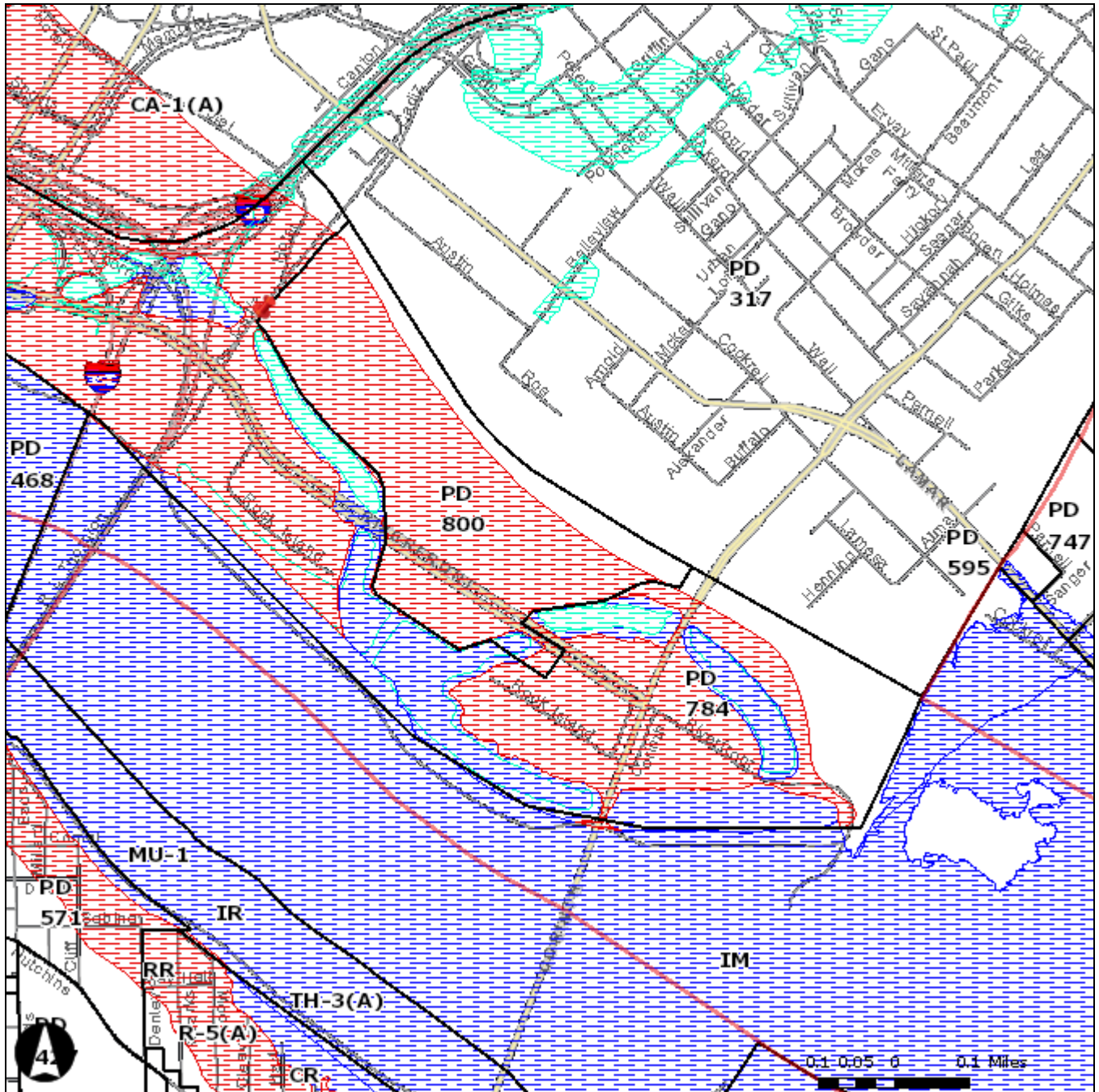


City of Dallas Zoning



Address Candidates



City Boundaries



Council Districts



Zoning Disclaimer

Major Lakes



PD193 Oak Lawn



Base Zoning



Floodplain

100 Flood Zone

Mill's Creek

Peak's Branch

X PROTECTED BY LEVEE

0.1 0.05 0 0.1 Miles

The data on this website do not constitute the official zoning map of the City of Dallas. We make every effort to ensure this data is accurate and complete, but this website should not be relied on as a substitute for the official version. No development activity should be started without reference to the official version. The official version may be obtained by contacting the Sustainable Development & Construction Department.

This website may not contain the most recent changes to zoning, though updates are typically made within a week of an ordinance being passed by City Council.

If you need assistance with the website, please contact the GIS section of the Sustainable Development & Construction Department at (214) 670-3895. Questions about Zoning or other development related topics should be directed to the Building Inspection Division of the Sustainable Development & Construction Department at (214) 948-4480. The majority of data available on this website is maintained by the City of Dallas Sustainable Development & Construction Department, with a few important exceptions. The Wet/Dry data is provided by each of the five counties that contain a portion of the City of Dallas. Questions regarding this data should be directed to the appropriate county. The floodplain information is provided by the City of Dallas Trinity Watershed Management Department, Floodplain and Drainage Management Division. They are located at 320 E Jefferson Blvd, Room 307, and can be reached at (214) 948-4690.